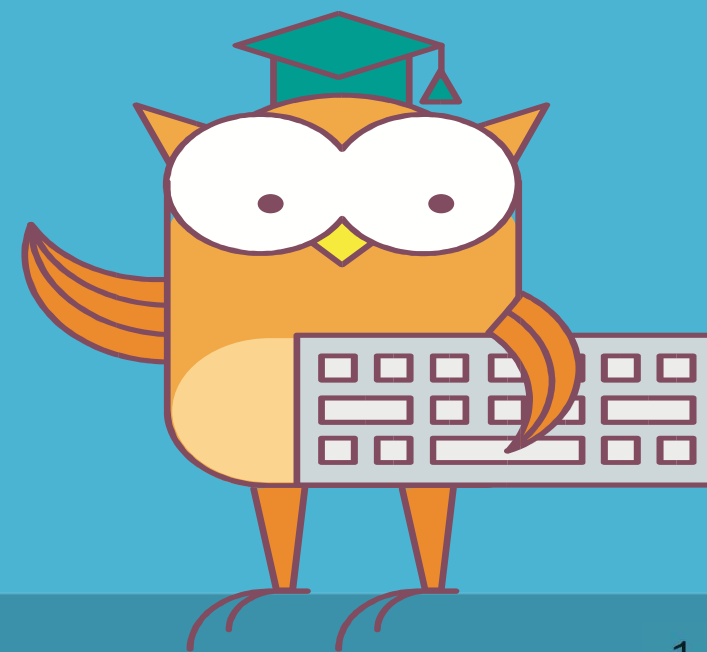


O T U S

ОНЛАЙН-ОБРАЗОВАНИЕ

DDL: Create
Alter
Drop
Truncate



Цель вебинара

Получить опыт использования инструкций

- 1) Create login
- 2) Create database
- 3) Create table

- 4) Alter login
- 5) Alter database
- 6) Alter table

- 7) Drop login
- 8) Drop database
- 9) Drop table

Truncate

Составлять свои инструкции создания, изменения и обновления

Тренер: Ржевский Михаил Владимирович

CREATE statements

CREATE AGGREGATE	CREATE FULLTEXT INDEX	CREATE SEARCH PROPERTY LIST (Transact-SQL)
CREATE APPLICATION ROLE	CREATE FULLTEXT STOPLIST	CREATE SEQUENCE (Transact-SQL)
CREATE ASSEMBLY	CREATE FUNCTION	CREATE SERVER AUDIT
CREATE ASYMMETRIC KEY	CREATE INDEX	CREATE SERVER AUDIT SPECIFICATION
CREATE BROKER PRIORITY	CREATE LOGIN	CREATE SERVICE
CREATE CERTIFICATE	CREATE MASTER KEY	CREATE SPATIAL INDEX
CREATE COLUMNSTORE INDEX	CREATE MESSAGE TYPE	CREATE STATISTICS
CREATE CONTRACT	CREATE PARTITION FUNCTION	CREATE SYMMETRIC KEY
CREATE CREDENTIAL	CREATE PARTITION SCHEME	CREATE SYNONYM
CREATE CRYPTOGRAPHIC PROVIDER	CREATE PROCEDURE	CREATE TABLE
CREATE DATABASE	CREATE QUEUE	CREATE TRIGGER
CREATE DATABASE AUDIT SPECIFICATION	CREATE REMOTE SERVICE BINDING	CREATE TYPE
CREATE DATABASE ENCRYPTION KEY	CREATE RESOURCE POOL	CREATE USER
CREATE DEFAULT	CREATE ROLE	CREATE VIEW
CREATE ENDPOINT	CREATE ROUTE	CREATE WORKLOAD GROUP
CREATE EVENT NOTIFICATION	CREATE RULE	CREATE XML INDEX
CREATE EVENT SESSION	CREATE SCHEMA	CREATE XML SCHEMA COLLECTION
CREATE FULLTEXT CATALOG		

Тренер: Ржевский Михаил Владимирович

Create database

```
CREATE DATABASE database_name  
[ CONTAINMENT = { NONE | PARTIAL } ]  
[ ON  
    [ PRIMARY ] <filespec> [ ,...n ]  
    [ , <filegroup> [ ,...n ] ]  
    [ LOG ON <filespec> [ ,...n ] ]  
]  
[ COLLATE collation_name ]  
[ WITH <option> [ ,...n ] ]  
[;]
```

Create login

```
CREATE LOGIN login_name { WITH <option_list1> |  
FROM <sources> }
```

Create table

```
CREATE TABLE
  [ database_name . [ schema_name ] . | schema_name . ] table_name
  [ AS FileTable ]
  ( { <column_definition> | <computed_column_definition>
    | <column_set_definition> | [ <table_constraint> ] [ ,...n ] } )
  [ ON { partition_scheme_name ( partition_column_name ) | filegroup
    | "default" } ]
  [ { TEXTIMAGE_ON { filegroup | "default" } } ]
  [ FILESTREAM_ON { partition_scheme_name | filegroup
    | "default" } ]
  [ WITH ( <table_option> [ ,...n ] ) ]
[ ; ]
```

ALTER statements

ALTER APPLICATION ROLE	ALTER EVENT SESSION	ALTER ROLE
ALTER ASSEMBLY	ALTER FULLTEXT CATALOG	ALTER ROUTE
ALTER ASYMMETRIC KEY	ALTER FULLTEXT INDEX	ALTER SCHEMA
ALTER AUTHORIZATION	ALTER FULLTEXT STOPLIST	ALTER SEARCH PROPERTY LIST (Transact-SQL)
ALTER BROKER PRIORITY	ALTER FUNCTION	ALTER SEQUENCE (Transact-SQL)
ALTER CERTIFICATE	ALTER INDEX	ALTER SERVER AUDIT
ALTER CREDENTIAL	ALTER LOGIN	ALTER SERVER AUDIT SPECIFICATION
ALTER CRYPTOGRAPHIC PROVIDER	ALTER MASTER KEY	ALTER SERVICE
ALTER DATABASE	ALTER MESSAGE TYPE	ALTER SERVICE MASTER KEY
ALTER DATABASE AUDIT SPECIFICATION	ALTER PARTITION FUNCTION	ALTER SYMMETRIC KEY
ALTER DATABASE Compatibility Level	ALTER PARTITION SCHEME	ALTER TABLE
ALTER DATABASE Database Mirroring	ALTER PROCEDURE	ALTER TRIGGER
ALTER DATABASE ENCRYPTION KEY	ALTER QUEUE	ALTER USER
ALTER DATABASE File and Filegroup Options	ALTER REMOTE SERVICE BINDING	ALTER VIEW
ALTER DATABASE SET Options	ALTER RESOURCE GOVERNOR	ALTER WORKLOAD GROUP
ALTER ENDPOINT	ALTER RESOURCE POOL	ALTER XML SCHEMA COLLECTION

Тренер: Ржевский Михаил Владимирович

Alter database

```
ALTER DATABASE { database_name | CURRENT }  
{  
    MODIFY NAME = new_database_name  
    | COLLATE collation_name  
    | <file_and_filegroup_options>  
    | <set_database_options>  
}  
[;]
```

Alter login

```
ALTER LOGIN login_name
{
  <status_option>
  | WITH <set_option> [ ,... ]
  | <cryptographic_credential_option>
}
```

Alter table

<https://docs.microsoft.com/en-us/sql/t-sql/statements/alter-table-transact-sql?view=sql-server-2017>

```
ALTER TABLE [ database_name . [ schema_name ] . |
schema_name . ] table_name
{
    ALTER COLUMN column_name
    {
        [ type_schema_name . ] type_name [ ( { precision [
, scale ]
        | max | xml_schema_collection } ) ]
        [ COLLATE collation_name ]
        [ NULL | NOT NULL ] [ SPARSE ]
        | {ADD | DROP }
        { ROWGUIDCOL | PERSISTED | NOT FOR
REPLICATION | SPARSE }
    }
    | [ WITH { CHECK | NOCHECK } ]
    .....ADD .....DROP.....
```

DROP statements

DROP AGGREGATE	DROP FULLTEXT INDEX	DROP SEARCH PROPERTY LIST (Transact-SQL)
DROP APPLICATION ROLE	DROP FULLTEXT STOPLIST	DROP SEQUENCE (Transact-SQL)
DROP ASSEMBLY	DROP FUNCTION	DROP SERVER AUDIT
DROP ASYMMETRIC KEY	DROP INDEX	DROP SERVER AUDIT SPECIFICATION
DROP BROKER PRIORITY	DROP LOGIN	DROP SERVICE
DROP CERTIFICATE	DROP MASTER KEY	DROP SIGNATURE
DROP CONTRACT	DROP MESSAGE TYPE	DROP STATISTICS
DROP CREDENTIAL	DROP PARTITION FUNCTION	DROP SYMMETRIC KEY
DROP CRYPTOGRAPHIC PROVIDER	DROP PARTITION SCHEME	DROP SYNONYM
DROP DATABASE	DROP PROCEDURE	DROP TABLE
DROP DATABASE AUDIT SPECIFICATION	DROP QUEUE	DROP TRIGGER
DROP DATABASE ENCRYPTION KEY	DROP REMOTE SERVICE BINDING	DROP TYPE
DROP DEFAULT	DROP RESOURCE POOL	DROP USER
DROP ENDPOINT	DROP ROLE	DROP VIEW
DROP EVENT NOTIFICATION	DROP ROUTE	DROP WORKLOAD GROUP
DROP EVENT SESSION	DROP RULE	DROP XML SCHEMA COLLECTION
DROP FULLTEXT CATALOG	DROP SCHEMA	

Тренер: Ржевский Михаил Владимирович

DROP table

```
DROP TABLE [ database_name . [ schema_name ] . |  
schema_name . ] table_name [ ,...n ] [ ; ]
```

Drop database

```
DROP DATABASE { database_name |  
database_snapshot_name } [ ,...n ]  
[;]
```

Drop login

```
DROP LOGIN login_name
```

Тренер: Ржевский Михаил Владимирович

TRUNCATE statement

.

TRUNCATE TABLE

```
[ { database_name . [ schema_name ] . |  
schema_name . } ] table_name  
[ ; ]
```

Тренер: Ржевский Михаил Владимирович

Домашнее задание:



Написать скрипт создание вашей учебной базы данных.

Написать скрипт для создания таблиц.

Добавить `constraint` в ваши таблицы по смыслу, через инструкцию `ALTER`.

Написать скрипт для добавления хотя бы одного пользователя.

Тренер: Ржевский Михаил Владимирович

Заполните пожалуйста
опрос после занятия в Л.К.



Тренер: Ржевский Михаил Владимирович